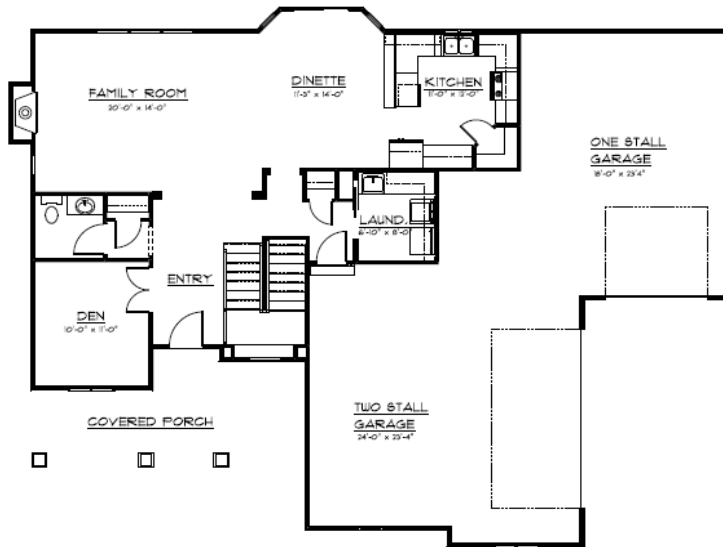




The Grayson

Starting at \$194,907



Main Floor Square Feet: 1,118



Second Floor Square Feet: 1,107

Another of Advantage Development's versatile two story plans. Designed to fit your lifestyle. Every aspect of the Grayson Plan can be adjusted or changed to fit specific needs. Whether it is a six-car garage or a six bedroom house..... Anything is possible with the Grayson Plan.

I would love to sit down and discuss your new custom home.

Alan Hans

Rachel Langford
Sarpy County Agent
Phone: 402 - 917 - 6308
rachel.langford@cbshome.com

Doyle Ollis
Sarpy County Agent
Phone: 402 - 214 - 2208
doyle.ollis@cbshome.com

